



EMERALD
PLANET

PRODUCT CATALOGUE

**SMART ENERGY
EFFICIENCY SOLUTIONS**



WELCOME TO EMERALD PLANET

OUR STORY

Emerald Planet is a leading Australian-owned manufacturer and distributor of smart energy-efficient solutions, with deep expertise in LED lighting. We have been at the forefront of the environmental abatement market, with a vision to reduce greenhouse emissions through smart technology, since our inception in 2006. Our understanding and involvement across national carbon abatement energy-efficiency schemes have evolved to offer a wide range of technologically superior products across residential, commercial and industrial sectors.

OUR DIFFERENCE

Emerald Planet's difference is our ability to design products to deliver optimum energy-efficiency, performance and reliability at affordable price points. Our focus on research and development, product quality, collaborative customer engagement and the ongoing development of our market expertise is the winning formula behind our success.

EMERALD PLANET TODAY

As we continue to innovate and operate at the forefront of energy-efficient technology, we remain committed to successful customer outcomes and the formation of long-lasting, trusted relationships.

“At Emerald Planet, we want our customers to gain the most out of technology. So we focus our energies on creating products that are technologically superior, last longer and perform better but consume less energy.”

Stuart Edgley

Stuart Edgley
Emerald Planet Managing Director

OUR MEMBERSHIPS



lightingcouncil.com.au



saaaustralia.org.au



eec.org.au



esia.asn.au



fluorocycle.org.au

TABLE OF CONTENTS

EMERALD PLANET IN FOCUS

EMERALD PLANET IN FOCUS	1
-------------------------	---

LIGHTING

LED BULBS 3

TRADITIONAL SERIES	5
OMNID SERIES	6
CANDLE SERIES	7
VINTAGE SERIES	8

LED SPOT & REFLECTOR LIGHTS 9

GU10 AND MR16 LIGHTS	10
PAR38 LIGHTS	11
BR BULB SERIES	12

LED DOWNLIGHTS 13

ECLIPSE HP SERIES	14
CRYSTAL LIGHTS	15
LUMINAIRE SERIES	16
OYSTER TRI-COLOUR SERIES	17

LED SHOP LIGHTS 19

ECLIPSE COMMERCIAL SERIES	20
ROUND SERIES	21
RECTANGULAR SERIES	22

LED BATTENS & TUBES 23

UNI IP20 BATTENS	24
UNI IP65 BATTENS	25
UNI EMERGENCY BATTENS	26
UNI FORTRESS BATTENS	27
T8 SERIES	28
T5 SERIES	29

LED PANELS 31

COMMANDER SERIES	32
EXECUTIVE SERIES	33
AMBASSADOR SERIES	34
LED PANEL ACCESSORIES	35

LED HIGH BAYS 37

HIGH-Q SERIES	38
EMERALD EYE SERIES	39
MOTION SENSOR	40
ALUMINIUM REFLECTOR	40

LED FLOODLIGHTS 41

SLIMLINE SERIES	42
TORRENT SERIES	43
MODULAR SERIES	44

SPORTS LIGHTING 45

OCULAR SERIES	46
GRAND VISTA SERIES	47

EMERGENCY LIGHTING

EMERGENCY LIGHTING 49

UNI EMERGENCY BATTENS	51
FIREFLY SERIES	52
FIREFLY SURFACE MOUNT KIT	52
FIREBOX	53
FIREBIRD	54
FIREBIRD EXPANSION PLATE	54

SMOKE ALARMS

SMOKE ALARMS 55

240V WIRED INTERCONNECTION	57
240V WIRED RF INTERCONNECTION	58
1YR BATTERY POWERED RF INTERCONNECTION	59
10YR BATTERY POWERED RF INTERCONNECTION	60
BATTERY POWERED (1YR)	61
BATTERY POWERED (10YR)	62

ACCESSORIES

ACCESSORIES 63

DIMMERS	65
STANDBY POWER CONTROLLERS	65
FAN SEAL	65
TORRENT FLOOD LIGHT GLARE SHIELD	65
MOTION SENSOR	66
ALUMINIUM REFLECTOR	66
TORRENT FLOOD LIGHT WIRE GUARD	66
GU10 CONNECTOR	66
SURFACE MOUNTING FRAME	67
RECESSED MOUNTING FRAME	67
FIREBIRD EXPANSION PLATE	67

ENERGY EFFICIENCY SCHEMES

ENERGY EFFICIENCY SCHEMES 70

LIGHTING TERMS

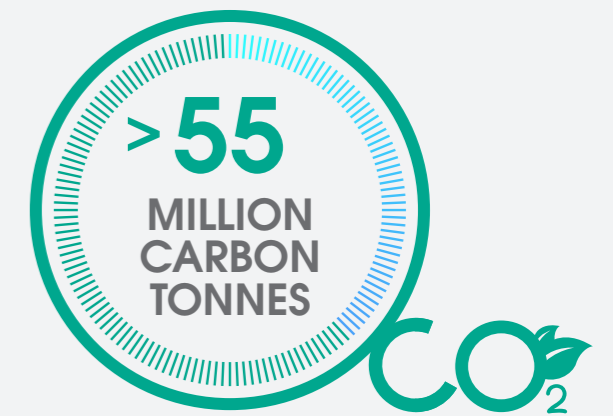
LIGHTING TERMS 71

INGRESS PROTECTION RATING GUIDE	72
---------------------------------	----



OUR PURPOSE

We remain committed to successful customer outcomes and the formation of long-lasting trusted relationships.



ENERGY EFFICIENT PRODUCTS SUPPLIED

CO₂ EMISSIONS REDUCED

OUR PRODUCT RANGE INCLUDES:

COMMERCIAL, RESIDENTIAL & INDUSTRIAL LIGHTING

EMERGENCY LIGHTING

SMOKE ALARMS

OUTSTANDING DESIGN



WE DESIGN AND MANUFACTURE ALL OF OUR PRODUCTS TO ENSURE **HIGH-PERFORMANCE AND QUALITY OUTPUT** FOR CUSTOMERS

OUR VISION

Emerald Planet aspires to enable a sustainable future by designing, building, manufacturing and distributing high performance energy efficient products.



LIGHTING

LED BULBS

TRADITIONAL SERIES

OMNID SERIES

CANDLE SERIES

VINTAGE SERIES



TRADITIONAL SERIES
A-BULB

The Traditional Series uses the latest generation technology and sets exceptional benchmarks in lumen efficiencies of over 130lm/W.

Ideal for upgrading from traditional, inefficient CFLs and incandescent lamps, the Traditional Series delivers vibrant, long lasting light at a fraction of the energy consumption.

Available in full size and small size Bayonet and Edison screw fittings.

FEATURES

- High efficacy 133-139lm/W
- High power factor
- Shadow-free frosted diffuser
- Traditional globe aesthetics
- Broad 160° beam angle

SPECIFICATIONS

POWER FACTOR	0.96	MODEL NUMBER	CCT	BASE	WATT	LCP	LUMENS	EFFICACY
CRI	>80	EP-ABC9-3	3000K	B22	9	8.76	1168	133lm/W
BEAM ANGLE	160°	EP-AES9-3	3000K	E27	9	8.76	1168	133lm/W
DIMMABLE	No	EP-ABC9-4	4000K	B22	9	8.90	1221	137lm/W
IP RATING	20	EP-AES9-4	4000K	E27	9	8.90	1221	137lm/W
LIFETIME (L70)	>50,000hrs	EP-ABC7-3	3000K	B22	7	6.93	932	135lm/W
WARRANTY	3 Years	EP-AES7-3	3000K	E27	7	6.93	932	135lm/W
		EP-ABC7-4	4000K	B22	7	6.91	963	139lm/W
		EP-AES7-4	4000K	E27	7	6.91	963	139lm/W



OMNID SERIES
A-BULB

The OmniD Series sets an unprecedented benchmark in lumen efficiencies of over 140lm/W. Superior standard Omnidirectional light technology affords uniform lighting distribution not found in standard LED A-bulbs.

Ideal for upgrading from traditional, inefficient CFLs and incandescent bulbs, the OmniD Series delivers a “one product solution” for upgrading all fitting types and environments with vibrant, long lasting light at a fraction of the energy consumption.

FEATURES

- Ultra high efficacy up to 150lm/W
- High power factor
- Shadow-free frosted diffuser
- Traditional globe aesthetics
- Smooth even Omnidirectional light distribution with wide 215° beam angle

SPECIFICATIONS

POWER FACTOR	>0.9	MODEL NUMBER	CCT	BASE	WATT	LCP	LUMENS	EFFICACY
CRI	>80	EP-OABC7-3	3000K	B22	7	6.79	991	146lm/W
BEAM ANGLE	215°	EP-OAES7-3	3000K	E27	7	6.79	991	146lm/W
DIMMABLE	No	EP-OABC7-4	4000K	B22	7	6.66	1000	150lm/W
IP RATING	20	EP-OAES7-4	4000K	E27	7	6.66	1000	150lm/W
LIFETIME (L70)	>50,000hrs							
WARRANTY	3 Years							





CANDLE SERIES

The Candle Series sets the benchmark in lumen efficiencies, reaching 136lm/W in a GLS lamp.

Ideal for upgrading from traditional, inefficient CFLs and incandescent lamps, the Candle Series delivers vibrant, long lasting light at a fraction of the energy consumption.

Available in full size and small size Bayonet and Edison screw fittings.

FEATURES

- High efficacy 136lm/W
- High power factor
- Shadow-free frosted diffuser
- Traditional globe aesthetics
- Broad 160° beam angle
- Dimmable with trailing edge and leading edge dimmers

VINTAGE SERIES

A retro filament-style globe with a soft, warm light, the Vintage LED Bulbs are perfect for mood lighting and ambience. Dimmable to allow soft, low light levels and with a colour temperature less than 2700K, our Vintage LED Bulbs provide a warm, yellow glow at a fraction of the energy consumption of traditional filament bulbs.

FEATURES

- Retro filament-style look
- Soft, warm light <2700K
- Dimmable 5W
- G80 and ST65 shapes
- E27 and B22 bases

SPECIFICATIONS

POWER FACTOR	0.9	MODEL NUMBER	CCT	BASE	WATT	LCP	LUMENS	EFFICACY
CRI	>80	EP-BCDC5-3	3000K	B22	5	5.20	710	136lm/W
BEAM ANGLE	160°	EP-ESDC5-3	3000K	E27	5	5.20	710	136lm/W
DIMMABLE	Yes	EP-BCDC5-4	4000K	B22	5	5.20	712	136lm/W
IP RATING	20	EP-ESDC5-4	4000K	E27	5	5.20	712	136lm/W
LIFETIME (L70)	>50,000hrs	EP-SBCDC5-3	3000K	B15	5	5.20	710	136lm/W
WARRANTY	3 Years	EP-SESDC5-3	3000K	E14	5	5.20	710	136lm/W
		EP-SBCDC5-4	4000K	B15	5	5.20	712	136lm/W
		EP-SESDC5-4	4000K	E14	5	5.20	712	136lm/W

3W available in Candle and Round (non-dimmable)
5W available in Candle (dimmable)

SPECIFICATIONS

POWER FACTOR	>0.9	MODEL NUMBER	CCT	SHAPE	BASE	WATT	LCP	LUMENS	EFFICACY
CRI	>80	EP-ANST65-BC5D	<2700K	Teardrop ST65	B22 (BC)	5	5.05	325	64lm/W
DIMMABLE	Yes	EP-ANST65-ES5D	<2700K	Teardrop ST65	E27 (ES)	5	5.05	325	64lm/W
IP RATING	20	EP-ANG80-BC5D	<2700K	Round G80	B22 (BC)	5	5.05	325	64lm/W
LIFETIME (L70)	>50,000hrs	EP-ANG80-ES5D	<2700K	Round G80	E27 (ES)	5	5.05	325	64lm/W
WARRANTY	3 Years								



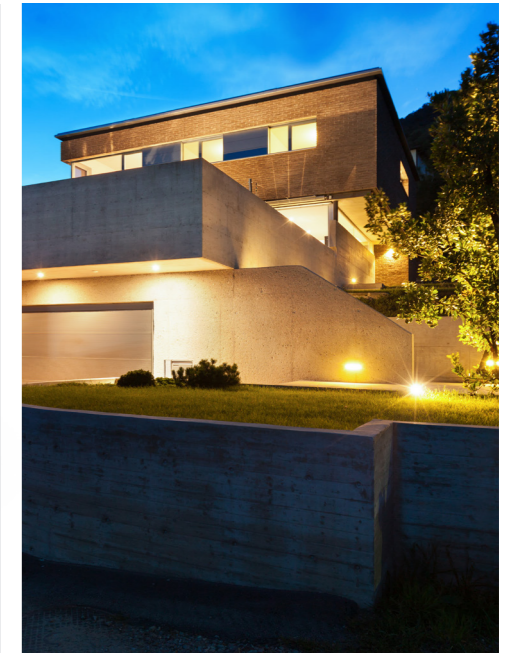
LIGHTING
LED SPOT & REFLECTOR LIGHTS

LIGHTING
LED SPOT & REFLECTOR LIGHTS

GU10 AND MR16 LIGHTS

PAR38 LIGHTS

BR BULB SERIES



GU10 AND MR16 LIGHTS

GU10 and MR16 are the lights of choice for replacing existing halogen globes without needing to change the transformer.

Exceeding an incredible 100+ lumens per watt and at 500 lumens, it offers unprecedented energy-efficiency and brightness. Optional GU10 connector with junction box shown - no screwdriver required.

FEATURES

- >100lm/W efficacy
- Dimmable and non-dimmable GU10 models
- Equivalent brightness to 35W and 50W halogens
- Low operating temperature, a fraction of the heat of halogens

SPECIFICATIONS

POWER FACTOR	>0.9	GU10 BASE	CCT	DIMMABLE	WATT	LCP	LUMENS	EFFICACY
CRI	>80	EP-GU10-530	3000K	No	5	4.73	499	106lm/W
BEAM ANGLE	60°	EP-GU10-530D	3000K	Yes	5	4.77	495	105lm/W
IP RATING	20	EP-GU10-540	4000K	No	5	4.67	500	107lm/W
LIFETIME (L70)	>50,000hrs	EP-GU10-540D	4000K	Yes	5	4.59	490	109lm/W
WARRANTY	3 Years	GU5.3 BASE						
		EP-MR16-530	3000K	No	5	4.57	482	105lm/W
		EP-MR16-540	4000K	No	5	4.66	469	101lm/W



LIGHTING

LED SPOT & REFLECTOR LIGHTS



PAR38 LIGHTS

Emerald Planet's LED PAR38 light range are durable, weatherproof, highly-efficient, direct upgrades for common 75W to 150W PAR38 floodlights.

Offering 110+ lumens per watt efficacy, these lamps deliver a combination of high energy savings with crisp, bright, even light output.

FEATURES

- High efficacy >110lm/W
- Lightweight, thermally-resistant polycarbonate body
- IP44 rating

SPECIFICATIONS

POWER FACTOR	>0.9	MODEL NUMBER	CCT	BASE	WATT	LCP	LUMENS	EFFICACY
CRI	>80	EP-LP38-19	6000K	E27	19	18.7	2066	114lm/W
BEAM ANGLE	33°							
DIMMABLE	No							
IP RATING	44							
LIFETIME (L70)	>50,000hrs							
WARRANTY	3 Years							

LIGHTING

LED SPOT & REFLECTOR LIGHTS



BR BULB SERIES

The BR Bulb Series sets an exceptional benchmark in lumen efficiencies of over 130lm/W in a GLS directional lamp.

Ideal for upgrading from traditional inefficient PAR lamps, the BR Bulb delivers vibrant, long lasting light at a fraction of the energy consumption.

FEATURES

- High efficacy >130lm/W
- Rated for outdoor environments
- High power factor
- Shadow-free frosted diffuser
- Traditional globe aesthetics

SPECIFICATIONS

POWER FACTOR	>0.9	MODEL NUMBER	CCT	BASE	WATT	LCP	LUMENS	EFFICACY
CRI	>80	EP-LBR303-12	3000K	E27	11	10.73	1390	130lm/W
BEAM ANGLE	110°	EP-LBR304-12	4000K	E27	11	10.73	1390	130lm/W
DIMMABLE	No	EP-LBR403-20	3000K	E27	18	18.32	2500	136lm/W
IP RATING	44	EP-LBR404-20	4000K	E27	18	18.32	2500	136lm/W
LIFETIME (L70)	>50,000hrs							
WARRANTY	3 Years							



LIGHTING
LED DOWNLIGHTS

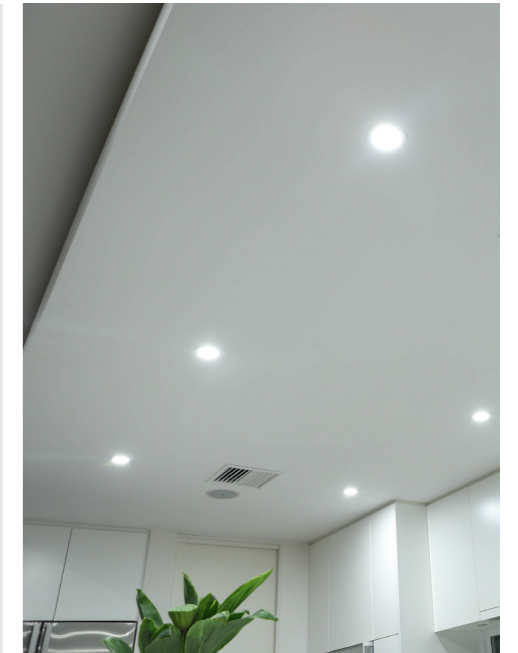
LIGHTING
LED DOWNLIGHTS

ECLIPSE HP SERIES

CRYSTAL LIGHTS

LUMINAIRE SERIES

OYSTER TRI-COLOUR SERIES



ECLIPSE HP SERIES

The Eclipse HP (High Performance) is the benchmark in energy efficiency reaching 100+ lumens per watt. The HP is designed to cast the perfect amount of light for residential environments and is complemented with a recessed polycarbonate diffuser and matte white finish.

INSTALLATION RECOMMENDATION:

- 5W - Standard ceiling (up to 3m)
- 8W - High ceiling (>3m)

FEATURES

- High efficacy
- Recessed diffuser
- Lightweight, energy-efficient
- Thermally resistant polycarbonate construction
- Wide dimming range
- Compatible with TRIAC dimmers
- Rated IC-4 (can be covered by insulation)
- Driver integrated into lamp body

SPECIFICATIONS

POWER FACTOR	>0.9
CRI	>80
BEAM ANGLE	90°
IP RATING	40
LIFETIME (L70)	>50,000hrs
WARRANTY	3 Years

MODEL NUMBER	CCT	DIMENSIONS	DIMMABLE	WATT	LCP	LUMENS	EFFICACY
EP-PC570-D3	3000K	70mm	Yes	5	4.97	538	108.1lm/W
EP-PC590-3	3000K	90mm	No	5	4.88	523	107.7lm/W
EP-PC590-D3	5000K	90mm	Yes	5	4.92	521	105.8lm/W
EP-PC590-D4	4000K	90mm	Yes	5	4.8	526	110lm/W
EP-PC590-D6	5000K	90mm	Yes	5	4.92	521	105.8lm/W
EP-PC890-D3	3000K	90mm	Yes	8	7.8	840	107.7lm/W
EP-PC890-D6	6000K	90mm	Yes	8	7.8	840	107.7lm/W





CRYSTAL LIGHTS
70MM AND 90MM COMPATIBLE

The Crystal Downlight from Emerald Planet is an elegant, dimmable LED lamp and driver kit, with a crisp, anti-glare crystal lens. Its sharp aesthetics combine traditional halogen MR16 looks with modern LED luminaire design.

FEATURES

- Complete replacement kit
- Sharp, modern looks
- COB design
- Tilt gimbal
- Compatible with TRIAC dimmers

SPECIFICATIONS

POWER FACTOR	>0.9
CRI	>80
BEAM ANGLE	60°
DIMMABLE	Yes
IP RATING	20
DIMENSIONS	70mm/90mm combined
LIFETIME (L70)	>50,000hrs
WARRANTY	3 Years

MODEL NUMBER	CCT	WATT	LCP	LUMENS	EFFICACY
EP-DLC-8	3000K	8	8.6	720	83lm/W



LUMINAIRE SERIES

Emerald Planet's Downlight Luminaire Series is a modern, architecturally-designed, dimmable lamp and driver kit. Its simple flush mounted white diffuser allows it to subtly disappear into the ceiling.

The Tri-Colour Luminaire gives you the option to switch between varying colour temperatures to suit customer needs.

FEATURES

- Complete replacement kit
- Broad beam angle with no shadowing
- Low profile, fits narrow ceiling cavities
- Compatible with TRIAC dimmers
- Available in 70mm and 90mm cut-outs

SPECIFICATIONS

POWER FACTOR	>0.9
CRI	>80
BEAM ANGLE	90°
DIMMABLE	Yes
IP RATING	20
LIFETIME (L70)	>50,000hrs
WARRANTY	3 Years

MODEL NUMBER	CCT	DIMENSIONS	WATT	LCP	LUMENS	EFFICACY
EPU-DL-8508	3000K	70mm	10	9.94	733	74lm/W
EPU-DL-8515	4000K	70mm	10	9.96	832	84lm/W
EP-TRI-107	3/4/5000K	70mm	10	9.59	600-700	73lm/W
EP-TRI-109	3/4/5000K	90mm	10	9.59	600-700	73lm/W



LIGHTING

LED OYSTER LIGHT



OYSTER TRI-COLOUR SERIES

The LED Oyster Lights are a highly-efficient, complete luminaire replacement for older fluorescent oyster fittings. Available in 300mm and 400mm diameters in a range of wattages, our LED Oyster Lights feature a convenient tri-switchable colour temperature offering 3000K, 4000K and 5700K out of the same luminaire.

No remote required, you can simply change colours using a physical switch on the luminaire. Additionally, our LED Oyster Lights are dimmable making them versatile and ideal for both residential and commercial applications.

FEATURES

- TRIAC dimmable
- Switchable CCT 3000K/4000K/5700K using a physical switch on the luminaire
- 300mm and 400mm diameter options
- Broad 120° beam angle

SPECIFICATIONS

POWER FACTOR	>0.9	MODEL NUMBER	CCT	DIMENSIONS	WATT	LCP	LUMENS	EFFICACY
CRI	>80	EP-LOS-18	3/4/5700K switchable	300mm	18	17.71	1839	104lm/W
BEAM ANGLE	120°	EP-LOS-25	3/4/5700K switchable	300mm	25	24.59	2474	101lm/W
DIMMABLE	Yes	EP-LOS-30	3/4/5700K switchable	400mm	30	28.47	2938	103lm/W
IP RATING	54							
LIFETIME (L70)	>60,000hrs							
WARRANTY	5 Years							



LIGHTING LED SHOP LIGHTS

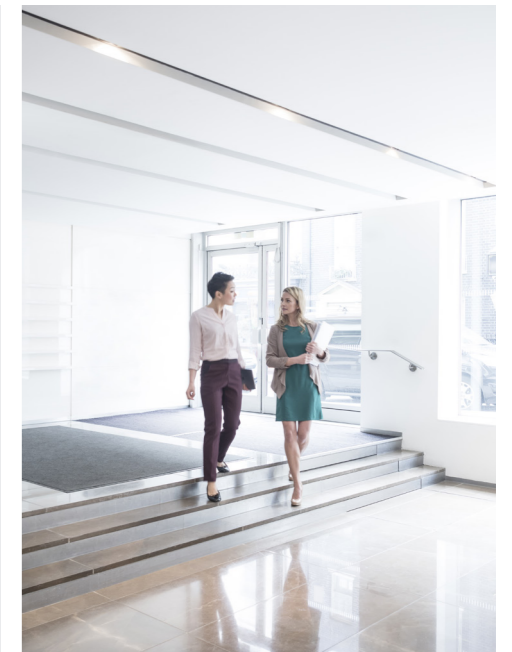
ECLIPSE COMMERCIAL SERIES

ROUND SERIES

RECTANGULAR SERIES



LIGHTING LED SHOP LIGHTS



ECLIPSE COMMERCIAL SERIES

The Eclipse Commercial LED Downlight range is a versatile, low wattage upgrade, perfectly suited for environments where discreet, recessed lighting is required such as hallways and corridors.

With over 80% energy saving over traditional twin PL lamps, the Eclipse Commercial range features a recessed design for glare reduction, lightweight thermally resistant polycarbonate body and convenient tri-colour switchable technology.

FEATURES

- Colour switchable between warm, white/cool and white/daylight
- High power factor
- Shadow-free frosted diffuser
- Deep recessed anti-glare aesthetics
- Broad 100° beam angle
- Compatible with TRIAC dimmers

SPECIFICATIONS

POWER FACTOR	>0.9	MODEL NUMBER	CCT	DIMENSIONS	WATT	LCP	LUMENS	EFFICACY
CRI	>80	EP-TRI125-10	3/4/5000K	125mm	10	9.65	851	88lm/W
BEAM ANGLE	100°	EP-TRI160-10	3/4/5000K	160mm	10	9.6	981	102lm/W
DIMMABLE	Yes	EP-TRI200-10	3/4/5000K	200mm	10	9.54	1026	108lm/W
IP RATING	54							
LIFETIME (L70)	>60,000hrs							
WARRANTY	5 Years							

- Dimensions:
- 125mm cut-out, 145mm face
 - 160mm cut-out, 190mm face
 - 200mm cut-out, 240mm face





ROUND SERIES

The Round Shoplight comes in a range of cut-out sizes and wattages, as well as dimmable and non-dimmable options to allow for various installations. All models have a pearl white diffuser with no shadowing.

FEATURES

- High efficacy
- Range of wattages and colours (CCT)
- Range of cut-out dimensions
- Dimmable and non-dimmable options
- Pearl white diffuser (no shadowing)
- Lightweight for easy installation
- Flex and plug included

SPECIFICATIONS

POWER FACTOR	>0.9	MODEL NUMBER	CCT	DIMMABLE	DIMENSIONS	WATT	LCP	LUMENS	EFFICACY
CRI	>80	EP-PC90-6K	5000K	Yes	150mm	9	8.76	800	95lm/W
BEAM ANGLE	120°	EP-CFSL-D156	5000K	Yes	200mm	15	15.40	1840	119lm/W
IP RATING	20	EP-CFSL-256	5000K	No	200mm	25	24.36	3165	130lm/W
LIFETIME (L70)	>60,000hrs								
WARRANTY	5 Years								

Dimensions:
15W and 25W • 190mm cut-out, 225mm face
9W • 147mm cut-out, 185mm face



RECTANGULAR SERIES

The Emerald Planet range of Rectangular Shoplights come in either aluminium or lightweight polycarbonate construction. All models have a wide face-plate for easy installation.

With a rotatable lens the shoplight can be rotated to cast optimal light distribution.

AVAILABLE IN:

- 18W and 24W Polycarbonate
- 35W Aluminium

FEATURES

- High efficacy
- Broad face-plate
- Rotatable lens
- Polycarbonate and aluminium options
- Flex and plug included

SPECIFICATIONS

POWER FACTOR	>0.9	MODEL NUMBER	CCT	DIMENSIONS	WATT	LCP	LUMENS	EFFICACY
CRI	>80	EP-PCRS-186	5000K	227x130mm	18	18.06	2139	118lm/W
BEAM ANGLE	120°	EP-PCRS-246	5000K	227x130mm	24	24.32	3165	130lm/W
DIMMABLE	No	EPS-RTSLLD-0250	5700K	227x130mm	35	34.41	3565	104lm/W
IP RATING	20							
LIFETIME (L70)	>60,000hrs							
WARRANTY	5 Years							

Dimensions:
18W and 24W • 225x120mm cut-out, 265x180mm face
35W • 215mmx112mm cut-out, 246mmx160mm face



LIGHTING LED BATTENS & TUBES

UNI IP20 BATTENS

UNI IP65 BATTENS

UNI EMERGENCY BATTENS

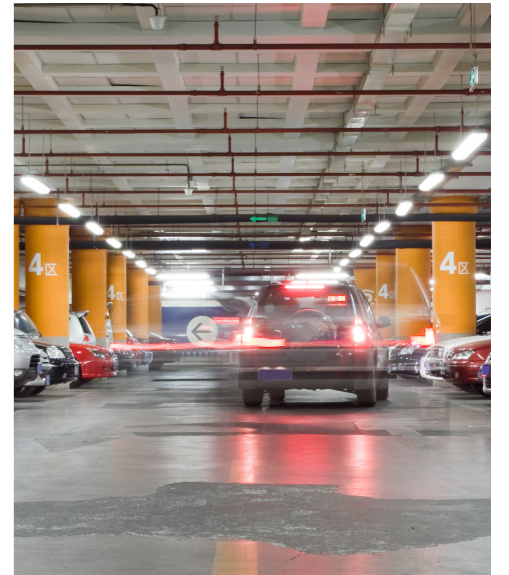
UNI FORTRESS BATTENS

T8 SERIES

T5 SERIES



LIGHTING LED BATTENS & TUBES



UNI BATTEN SERIES IP20 BATTENS

The Uni IP20 Batten Series is built around a philosophy of delivering ease of installation with high efficiency.

The **Tri-Colour Batten** features switch controlled colour temperature, giving you the flexibility to match existing lighting colours and provide your customers with additional options.

The **Sensor Batten** includes a built-in motion sensor with customisable dimming levels and hold times. The energy savings that the dimmable sensor delivers, makes this batten the perfect fit for environments with variable occupancy.

FEATURES

- Traditional batten profile
- Surface mountable or suspendable
- Flicker free driver
- No external junction box required
- Broad 120° beam angle
- Available with built-in sensor and tri-colour models
- IK08 rating

SPECIFICATIONS

POWER FACTOR	>0.9
CRI	>80
BEAM ANGLE	120°
IP RATING	20
LIFETIME (L70)	>60,000hrs
WARRANTY	5 Years

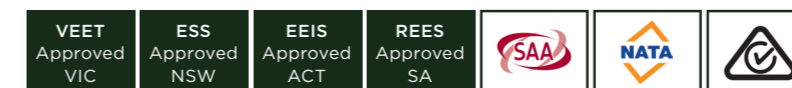
SENSOR SETTINGS

DETECTION RANGE	5 or 10 metres
HOLD TIME	1m, 5m, 15mins or infinite
DAYLIGHT SENSOR	50Lux or disabled
STANDBY PERIOD	0s, 5m, 30m or infinite
STANDBY LEVEL	10, 20, 30 or 50%

Highlighted values = sensor default settings

LPM = LCP LOW POWER MODE

MODEL NUMBER	CCT	DIMENSIONS	WATT	LCP	LPM	LUMENS	EFFICACY
EP-UNI-620-10	5000K	600mm	10	9.78		1394	142lm/W
EP-UNI-1220-25	5000K	1200mm	25	24.88		3617	145lm/W
TRI-COLOUR							
EP-UNI-T620-18	4/5/6000K	600mm	18	17.82		2467	138lm/W
EP-UNI-TS1220-15	4/5/6000K	1200mm	15	15	1.5	2000	133lm/W
EP-UNI-T1220-25	4/5/6000K	1200mm	25	24.13		3696	153lm/W
EP-UNI-T1220-35	4/5/6000K	1200mm	35	34.23		3935	144lm/W
EP-UNI-T1220-45	4/5/6000K	1200mm	45	45		5400	120lm/W
TRI-COLOUR WITH SENSOR							
EP-UNI-TS620-18	4/5/6000K	600mm	18	17.25	1.7	2419	140lm/W
EP-UNI-TS1220-25	4/5/6000K	1200mm	25	24.46	2.4	3593	147lm/W
EP-UNI-TS1220-35	4/5/6000K	1200mm	35	34.19	3.4	4466	131lm/W
EP-UNI-TS1220-45	4/5/6000K	1200mm	45	45	4.5	5400	120lm/W
EP-UNI-TS1520-45	4/5/6000K	1500mm	45	45	4.5	5400	120lm/W





UNI BATTEN SERIES
IP65 BATTENS

The Uni IP65 Batten Series is waterproof, IK10 impact resistant and designed as the ideal upgrade product to replace existing surface mounted or suspended fluorescent battens in outdoor locations.

The IP65 Batten includes switch controlled tri-colour temperature options, an adjustable built-in motion sensor and the option to add an emergency backup battery.

FEATURES

- Ideal for outside locations
- IP65 and IK10 rating
- Optional maintained emergency light
- Sensor with adjustable dim levels and hold times
- Tri-colour

UNI BATTEN SERIES
EMERGENCY BATTENS

The Uni Emergency Batten with a premium, 3 hour backup Lithium Nanophosphate (LiFePO4) battery, is fully compliant to the AS2293 emergency lighting standard.

With switchable tri-colour settings and built-in adjustable motion sensors, the Uni Emergency Batten allows customisation to a range of preferences. The Uni Emergency Batten also includes a self-test function to ensure that the battery is fully operational. Automated tests are performed at varying intervals with a visual warning light displayed when a problem is detected.

FEATURES

- Maintain emergency light
- 4.5W/3hr emergency power
- C0:D63, C90:D50
- Sensor with adjustable dim levels and hold times
- Self-test functionality
- IP20/65 and IK08/10 rating model options

SPECIFICATIONS

POWER FACTOR	>0.9
CRI	>80
BEAM ANGLE	120°
IP RATING	65
LIFETIME (L70)	>60,000hrs
WARRANTY	5 Years

SENSOR SETTINGS

DETECTION RANGE	5 or 10 metres
HOLD TIME	1m, 5m, 15mins or infinite
DAYLIGHT SENSOR	50Lux or disabled
STANDBY PERIOD	0s, 5m, 30m or infinite
STANDBY LEVEL	10, 20, 30 or 50%

Highlighted values = sensor default settings

LPM = LCP LOW POWER MODE

MODEL NUMBER	CCT	DIMENSIONS	WATT	LCP	LPM	LUMENS	EFFICACY
IP65 TRI-COLOUR							
EP-UNI-T665-18	4/5/6000K	600mm	18	18.23		2313	127lm/W
EP-UNI-T1265-25	4/5/6000K	1200mm	25	23.82		3261	137lm/W
EP-UNI-T1265-35	4/5/6000K	1200mm	35	34.82		4689	135lm/W
IP65 TRI-COLOUR WITH SENSOR							
EP-UNI-TS665-18	4/5/6000K	600mm	18	17.4	1.7	2214	127lm/W
EP-UNI-TS1265-25	4/5/6000K	1200mm	25	24.94	2.5	3287	132lm/W
EP-UNI-TS1265-35	4/5/6000K	1200mm	35	35	3.5	4200	120lm/W



SPECIFICATIONS

POWER FACTOR	>0.9
CRI	>80
BEAM ANGLE	120°
IP RATING	20 or 65
LIFETIME (L70)	>60,000hrs
WARRANTY	5 Years

SENSOR SETTINGS

DETECTION RANGE	5 or 10 metres
HOLD TIME	1m, 5m, 15mins or infinite
DAYLIGHT SENSOR	50Lux or disabled
STANDBY PERIOD	0s, 5m, 30m or infinite
STANDBY LEVEL	10, 20, 30 or 50%

Highlighted values = sensor default settings

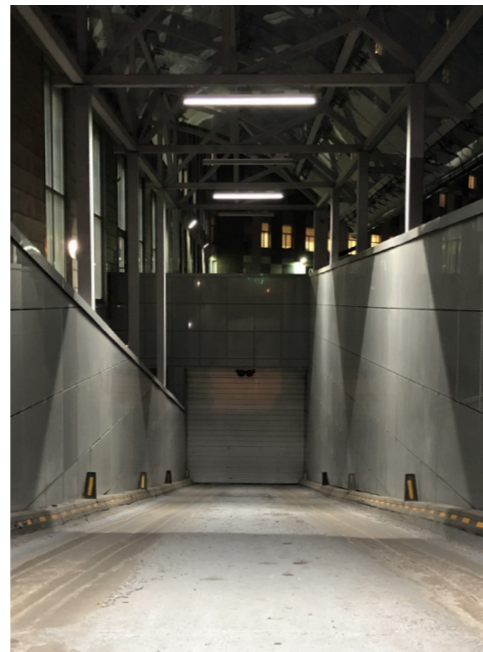
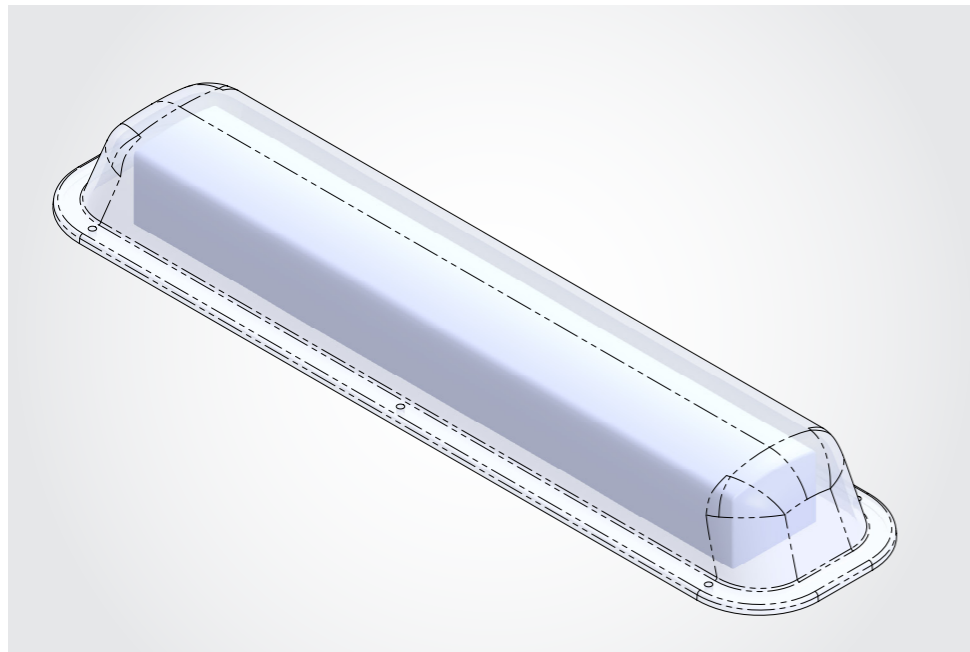
LPM = LCP LOW POWER MODE

MODEL NUMBER	CCT	DIMENSIONS	WATT	LCP	LPM	LUMENS	EFFICACY
IP20 TRI-COLOUR EMERGENCY WITH SENSOR							
EP-UNI-TES620-18	4/5/6000K	600mm	18	18.31	1.8	2283	125lm/W
EP-UNI-TES1220-15	4/5/6000K	1200mm	15	15	1.5	2000	133lm/W
EP-UNI-TES1220-25	4/5/6000K	1200mm	25	24.71	2.5	3307	134lm/W
EP-UNI-TES1220-35	4/5/6000K	1200mm	35	35	3.5	4200	120lm/W
IP65 TRI-COLOUR EMERGENCY WITH SENSOR							
EP-UNI-TES665-18	4/5/6000K	600mm	18	18	1.8	2200	125lm/W
EP-UNI-TES1265-25	4/5/6000K	1200mm	25	24.88	2.5	2957	119lm/W
EP-UNI-TES1265-35	4/5/6000K	1200mm	35	34.94	3.5	4351	125lm/W



LIGHTING

LED BATTENS & TUBES



UNI BATTEN SERIES

FORTRESS BATTENS

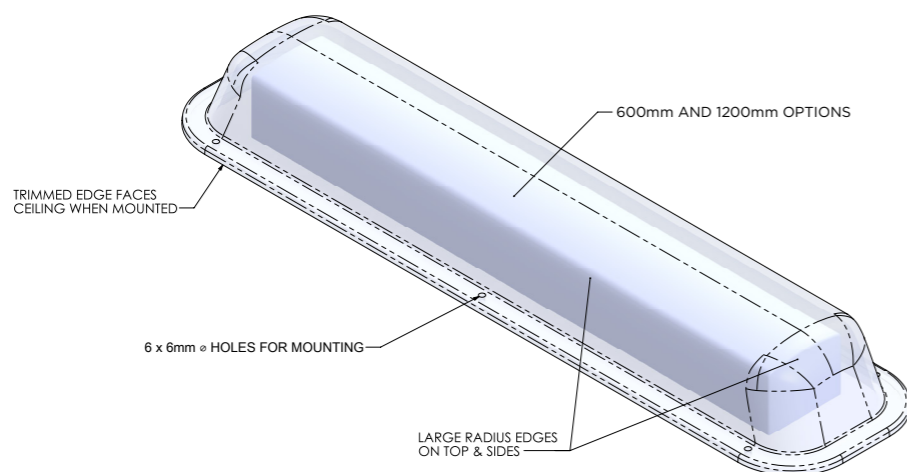
The Uni Fortress Batten is built to withstand and resist the toughest conditions where anti-vandalism, tamper proofing and anti-ligature are paramount.

Designed on the principles of increased security and safety, the Uni Fortress Batten is made from 4.5mm Makrolon Polycarbonate making it suitable for deployment in the most demanding settings, such as prisons, high traffic public spaces, railways, sporting arenas and car parks.

Catering for every installation scenario, the Uni Fortress Batten offers emergency back-up, motion sensors and tri-colour model options.

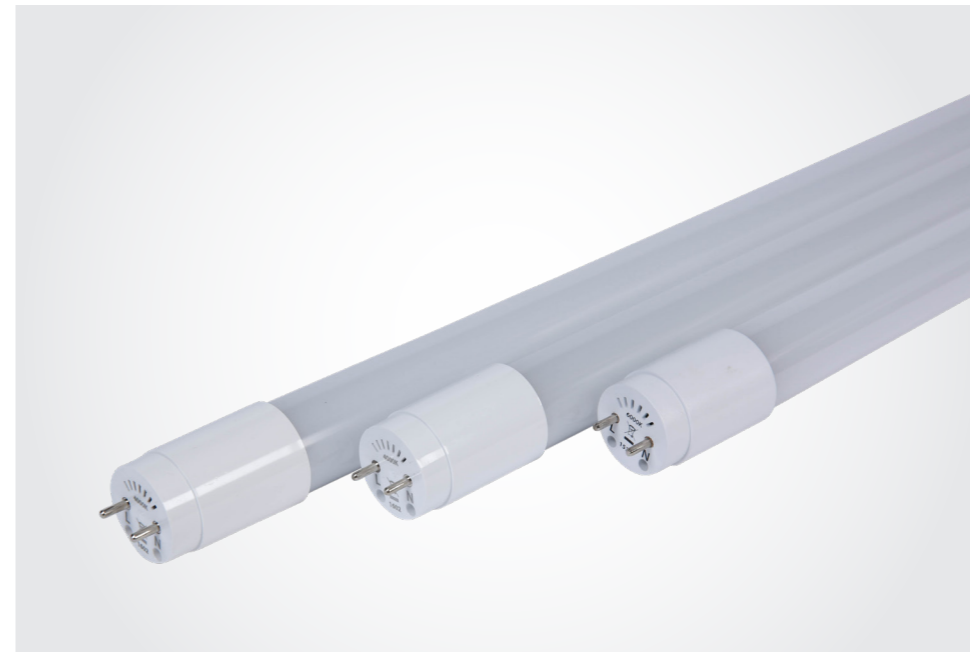
FEATURES

- 4.5mm Makrolon Polycarbonate
- Undistorted optics
- Reusable Makrolon casing
- Available in 600mm, 1200mm, tri-colour, motion sensor and emergency models
- Casing available separately



LIGHTING

LED BATTENS & TUBES



T8 SERIES

Emerald Planet's T8 LED tubes represent the latest technology and highest efficiency for upgrading traditional T8 fluorescent tubes. Available in a range of wattages, materials and lengths to suit different environments. Emerald Planet tubes are field tested and proven.

ACCESSORIES:

- Inline HRC fuse
- Lockable HRC starter
- Starter sockets

FEATURES

- Available in 4000K, 5000K and 6000K
- 600mm, 1200mm and 1500mm options
- Broad 175° beam angle for superior light distribution
- Fully ERAC compliant with supplied HRC fuse LED starter and optional inline HRC fuse
- Extra safety thermal cut-out fuse
- Long lifetime, high reliability

SPECIFICATIONS

POWER FACTOR	>0.9	MODEL NUMBER	CCT	DIMENSIONS	WATT	MATERIAL	LCP	LUMENS	EFFICACY
CRI	>80	EP-TPC6-4K	4000K	600mm	6	PC	6.35	977	154lm/W
BEAM ANGLE	175°	EP-TPC6-6K	5000K						
DIMMABLE	No		6000K						
IP RATING	20	EP-TPC12-4K	4000K	1200mm	11	PC	11.28	1856	165lm/W
LIFETIME (L70)	>60,000hrs	EP-TPC12-6K	5000K						
WARRANTY	3 Years		6000K						
		EP-TPC16-6K	5000K	1200mm	16	PC	15.15	2089	138lm/W
		EP-TPC1516-4K	4000K	1500mm	16	PC	16.08	2458	153lm/W
		EP-TPC1516-6K	5000K						



LIGHTING

LED BATTENS & TUBES



T5 SERIES

Emerald Planet's T5 LED tubes represent the latest technology and highest efficiency for upgrading traditional T5 fluorescent tubes. Available in a range of wattages and lengths to suit different environments. Emerald Planet tubes are field tested and proven.

ACCESSORIES:

- Inline HRC fuse
- Lockable HRC starter
- Starter sockets

FEATURES

- 600mm and 1200mm options
- 110° beam angle for superior light distribution
- Type A LED tube for modification type installation only
- Long lifetime, high reliability

SPECIFICATIONS

POWER FACTOR	>0.9
CRI	>80
BEAM ANGLE	110°
DIMMABLE	No
IP RATING	20
LIFETIME (L70)	>60,000hrs
WARRANTY	3 Years

MODEL NUMBER	CCT	DIMENSIONS	WATT	LCP	LUMENS	EFFICACY
EP-T5600-7W	5000K	600mm	7	7.35	945	135lm/W
EP-T512-14W	5000K	1200mm	14	13.72	1960	140lm/W



LIGHTING
LED PANELS

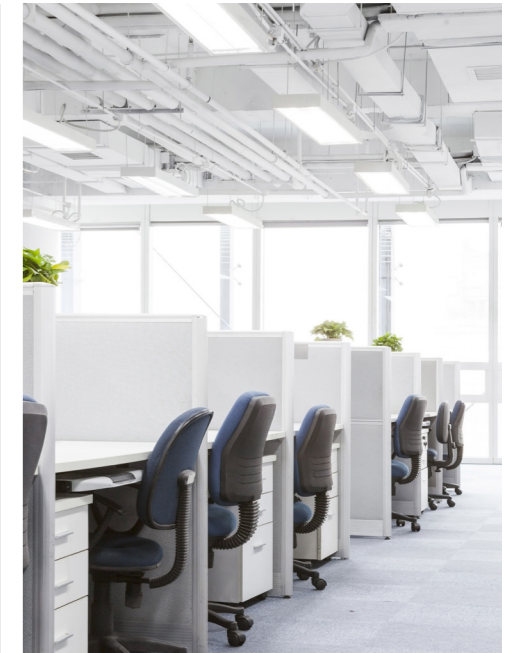
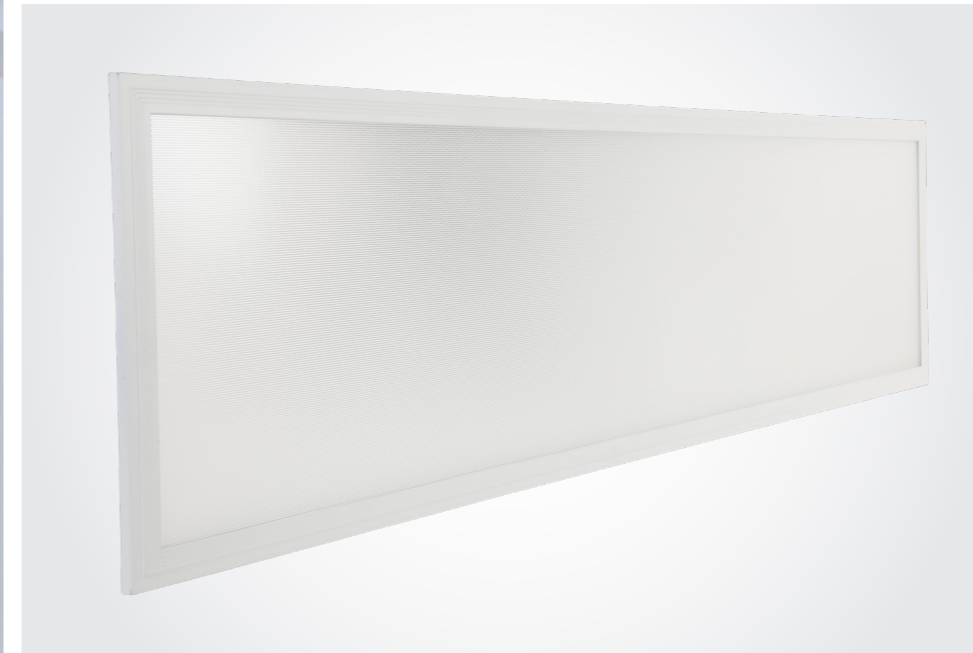
LIGHTING
LED PANELS

COMMANDER SERIES

EXECUTIVE SERIES

AMBASSADOR SERIES

LED PANEL ACCESSORIES



COMMANDER SERIES

The Commander LED Panel is a modern, slimline panel for commercial and office space applications. Its pearl white diffuser has no shadowing allowing for a modern aesthetic finish.

Driving maximum efficacy, the Commander Panel provides the most efficient and affordable LED panel solution.

FEATURES

- High efficacy
- Glare rating = UGR <22
- Pearl white diffuser and frame
- No shadowing
- Flex and plug included

SPECIFICATIONS

POWER FACTOR	>0.9	MODEL NUMBER	CCT	DIMENSIONS	WATT	LCP	LUMENS	EFFICACY
UGR	<22	EP-PL123-24	5000K	1192x292mm	24	23.94	3015	126lm/W
CRI	>80							
BEAM ANGLE	110°							
DIMMABLE	No							
IP RATING	20							
LIFETIME (L70)	>60,000hrs							
WARRANTY	5 Years							





EXECUTIVE SERIES

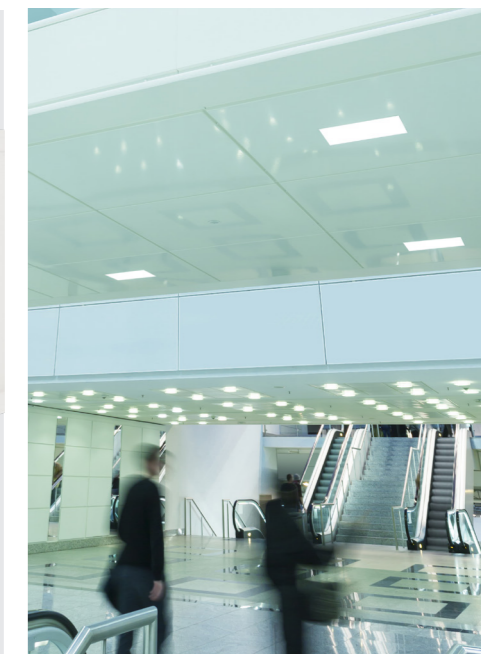
The Executive LED Panel is a modern, slimline panel for commercial office applications. Its pearl white diffuser has no shadowing allowing for a modern aesthetic finish. Its light weight body, high quality LED chips and robust LED driver is supported by a strong 5 year warranty.

FEATURES

- High efficacy
- Glare rating = UGR <22
- Pearl white diffuser and frame
- No shadowing
- Flex and plug included

SPECIFICATIONS

POWER FACTOR	>0.9	MODEL NUMBER	CCT	DIMENSIONS	WATT	LCP	LUMENS	EFFICACY
UGR	<22	EP-PL36-18	5000K	595x295mm	18	17.73	1980	112lm/W
CRI	>80	EP-PL66-28	5000K	595x595mm	28	28.12	3030	108lm/W
BEAM ANGLE	120°	EP-PL123-28	5000K	1192x292mm	28	28.12	3030	108lm/W
DIMMABLE	No	EP-PL126-50	5000K	1195x595mm	50	48.28	5487	114lm/W
IP RATING	20							
LIFETIME (L70)	>60,000hrs							
WARRANTY	5 Years							



AMBASSADOR SERIES
ANTI-GLARE

The Ambassador LED Panel is a premium, modern, slimline panel designed for low glare applications such as schools, universities or hospitals. Offering comfortable, even light output which won't fatigue the eyes.

Its high efficiency driver and LED chips allow for high efficacy, enabling the consumer to maximise energy savings.

FEATURES

- High efficacy
- Glare rating = UGR <19
- Microprism low glare diffuser
- No shadowing
- PMMA light guide
- Flex and plug included

DIMMABLE DRIVER ACCESSORY:

- Compatible with the 24W panel

SPECIFICATIONS

POWER FACTOR	>0.9	MODEL NUMBER	CCT	DIMENSIONS	WATT	LCP	LUMENS	EFFICACY
UGR	<19	EP-AGP66-20	4/6000K	595x295mm	15	15.64	1800	120lm/W
CRI	>80	EP-AGP66-24	4/6000K	595x595mm	24	23.91	2791	117lm/W
BEAM ANGLE	120°	EP-AGP123-24	4/6000K	1192x292mm	24	23.83	2693	113lm/W
DIMMABLE	No	EP-AGP126-40	4/6000K	1195x595mm	40	40.00	4680	117lm/W
IP RATING	20							
LIFETIME (L70)	>60,000hrs							
WARRANTY	5 Years							

DIMMABLE DRIVER
Compatible Systems: Dali/DSI/switchDIM/corridorFUNCTION



LIGHTING

LED PANEL ACCESSORIES



SURFACE MOUNTING FRAME

To fit 1192x292mm and 595x595mm size Emerald Planet panels.

RECESSED MOUNTING FRAME

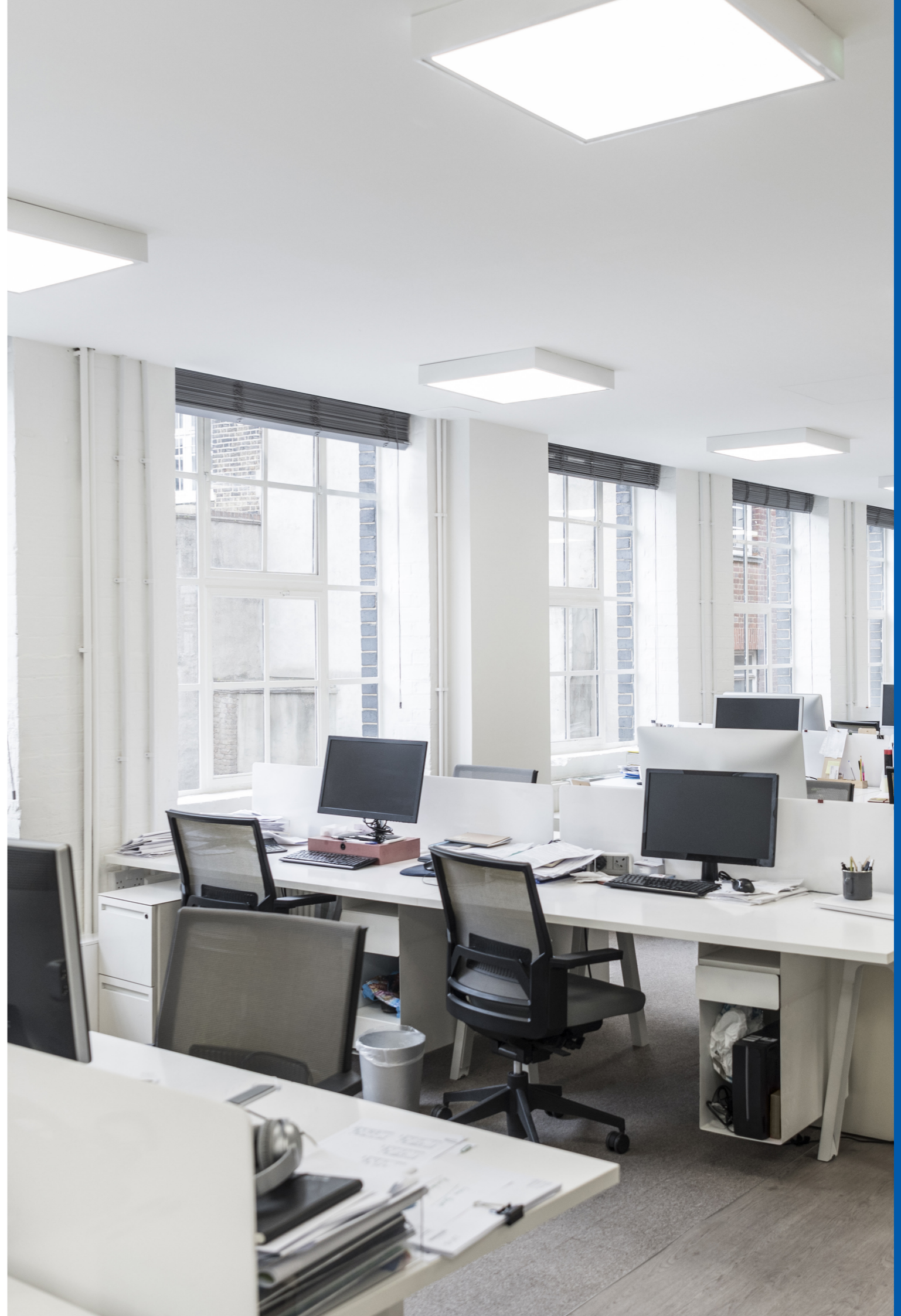
To fit 1192x292mm and 595x595mm size Emerald Planet panels in 1225x325mm and 625x625mm cut-outs.

SPECIFICATIONS

MODEL NUMBER	DIMENSIONS
EP-PF123	1210x310mm
EP-PF63	610x310mm
EP-PF66	613x613mm

SPECIFICATIONS

MODEL NUMBER	DIMENSIONS
EP-RPF123	1270x370mm
EP-RPF63	670x370mm
EP-RPF66	673x673mm



LIGHTING LED HIGH BAYS

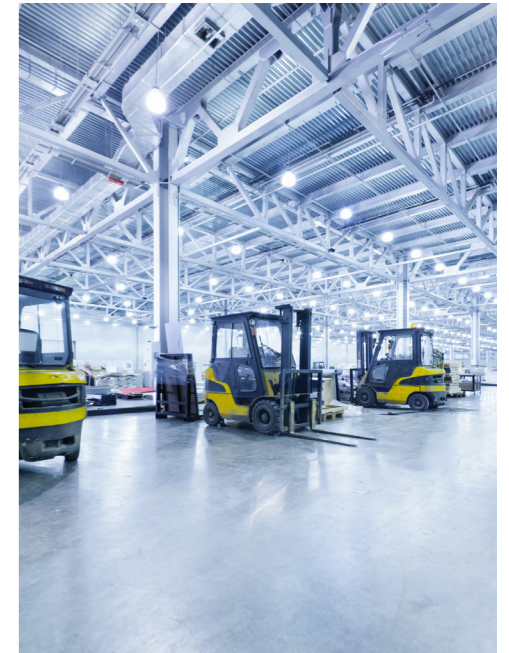
HIGH-Q SERIES

EMERALD EYE SERIES

MOTION SENSOR

ALUMINIUM REFLECTOR

LIGHTING LED HIGH BAY



HIGH-Q SERIES INCORPORATED MOTION AND DAYLIGHT SENSOR

The High-Q High Bay ticks all the right boxes. The sleek, sophisticated look allows for installation across retail, commercial and industrial spaces. The High-Q's recessed refractive lens allows the luminaire to achieve a very low UGR rating (UGR<22) resulting in low glare.

With its integrated dimming motion and daylight sensor (with on/off switch) the High-Q offers the consumer the option to introduce additional energy savings through smart control gear.

FEATURES

- High efficacy
- Low glare shatterproof diffuser
- Sleek sophisticated black aesthetics
- Integrated motion and daylight sensor (with on/off switch)
- Flex and plug included
- 90W and 110W: 300x109mm, 2.6kg
- 130W and 150W: 320x128mm, 3.2kg
- Full cut-off design

SPECIFICATIONS

POWER FACTOR	>0.9	MODEL NUMBER	CCT	WATT	LCP	LPM	LUMENS	EFFICACY
CRI	>80	EP-HQS-90	5000K	90	90.83	23.00	13625	150lm/W
BEAM ANGLE	75°	EP-HQS-110	5000K	110	109.70	27.50	16678	152lm/W
SENSOR	Yes	EP-HQS-130	5000K	130	131.30	33.10	19695	150lm/W
DIMMABLE	via sensor	EP-HQS-150	5000K	150	150.00	38.20	22537	150lm/W
IP RATING	20							
LIFETIME (L ₇₀)	>70,000h							
WARRANTY	5 Years							





EMERALD EYE SERIES

The Emerald EYE High Bay has been designed from the ground up to combine the highest standards of lighting performance and reliability with a rich list of features to maximise ease of installation, transportation and recycling. The result is a luminaire which delivers a superior lighting outcome whilst enabling fast, efficient delivery and installation.

FEATURES

- High efficacy >150lm/W
- Meanwell driver
- Suited to ambient temperatures of -20°C to 60°C
- IP65 rating
- Easy grip mounting bracket, easy to install
- Low profile, lightweight design (3.9kg)
- Adjustable mounting arm
- Shatterproof diffuser

MOTION SENSOR

FEATURES

- Daylight sensor
- Programmable sensor settings
- IP65 rating

ALUMINIUM REFLECTOR

FEATURES

- Beam angle 70°
- Installation via 4 x screws into the face-plate
- Dimension - 410x150mm
- Full cut-off design

SPECIFICATIONS

POWER FACTOR	>0.9	MODEL NUMBER	CCT	WATT	LCP	LUMENS	EFFICACY
CRI	>80	EP-LHB-70	5000K	70	67.02	10221	153lm/W
BEAM ANGLE	110°	EP-LHB-90	5000K	85	86.63	13185	152lm/W
DIMMABLE	1-10V	EP-LHB-100	5000K	100	100.30	15155	151lm/W
IP RATING	65	EP-LHB-110	5000K	115	116.00	17435	150lm/W
LIFETIME (L70)	>70,000h	EP-LHB-130	5000K	130	133.40	20464	153lm/W
WARRANTY	5 Years	EP-LHB-150	5000K	155	155.80	23417	150lm/W



LIGHTING LED FLOODLIGHTS

SLIMLINE SERIES

TORRENT SERIES

MODULAR SERIES

LIGHTING LED FLOODLIGHTS



SLIMLINE SERIES

The Slimline Floodlight range, with optional integrated sensor, is lightweight and easy to install. Using Phillips LED chips and delivering 120 lumens per watt, this highly efficient floodlight combines high energy savings and crisp, even light distribution across its broad beam angle.

With an IP65 rating and suitability across a wide temperature range, the Slimline Floodlight is built to withstand the elements.

FEATURES

- High efficacy
- Optional integrated motion and daylight sensor
- Lightweight and slimline
- Flex and plug included
- IP65 rating

SPECIFICATIONS

POWER FACTOR	>0.9	MODEL NUMBER	CCT	DIMENSIONS	WATT	LCP	LUMENS	EFFICACY
CRI	>80	EP-FL-15	5000K	148x38x117mm	15	14.04	1593	120lm/W
BEAM ANGLE	110°	EP-FL-30	5000K	200x43x149mm	30	30.33	3770	120lm/W
IP RATING	65	EP-FL-50	5000K	250x51x188mm	50	50.96	6822	120lm/W
LIFETIME (L ₇₀)	>70,000h	WITH SENSOR						
WARRANTY	5 Years	EP-FL-15S	5000K	148x38x117mm	15	14.04	1593	120lm/W
		EP-FL-30S	5000K	200x43x149mm	30	30.33	3770	120lm/W





*Image shown with glare guard



TORRENT SERIES

Designed for performance, reliability and the ability to manage the harsh weather conditions of Australia, the Torrent Floodlight is a perfect option for commercial applications. Its high efficacy of 130 lumens per watt delivers optimum performance, complemented by its diffuse lens and adjustable bracket which enables easy installation across a range of applications.

With an IP65 rating and tolerance across a wide ambient temperature range, the Torrent Series is built to last.

ACCESSORIES:

- Glare guard
- Protective wire mesh guard

FEATURES

- High efficacy
- IP65 rating
- Adjustable bracket for easy installation

SPECIFICATIONS

POWER FACTOR	>0.9	MODEL NUMBER	CCT	DIMENSIONS	WATT	LCP	LUMENS	EFFICACY
CRI	>80	EP-FL-70	5000K	260x275x102mm	70	69.81	9279	130lm/W
BEAM ANGLE	110°	EP-FL-100	5000K	260x275x102mm	100	99.32	13070	130lm/W
IP RATING	65	EP-FL-150	5000K	296x316x102mm	150	149	18497	130lm/W
LIFETIME (L70)	>70,000h	WITH SENSOR						
WARRANTY	5 Years	EP-FL-70S	5000K	260x275x102mm	70	69.81	9279	130lm/W



MODULAR SERIES

Designed for high light output environments, incorporating performance, reliability and the ability to manage the harsh weather conditions of Australia, the Modular Floodlight is a perfect option for large commercial applications such as sporting fields, airports etc. Its high efficacy is complemented by its diffuse adjustable lens that allows for a varied light distribution of choice. Its heavy duty adjustable bracket enables easy installation across a range of applications.

FEATURES

- Phillips LED chips and driver
- Shatterproof diffuser
- IP65 rating
- Available in 200W to 600W
- Full cut-off design

SPECIFICATIONS

POWER FACTOR	>0.9	MODEL NUMBER	CCT	DIMENSIONS	WATT	LCP	LUMENS	EFFICACY
CRI	>80	EP-MFL-200	5000K	544x258x110mm	200	200.1	26821	134lm/W
BEAM ANGLE	120°	EP-MFL-300	5000K	544x373x110mm	300	301.3	40065	133lm/W
IP RATING	65	EP-MFL-400	5000K	755x373x110mm	400	401.8	49324	123lm/W
LIFETIME (L70)	>70,000h	EP-MFL-600	5000K	755x516x110mm	600	602.1	75645	126lm/W
WARRANTY	5 Years							

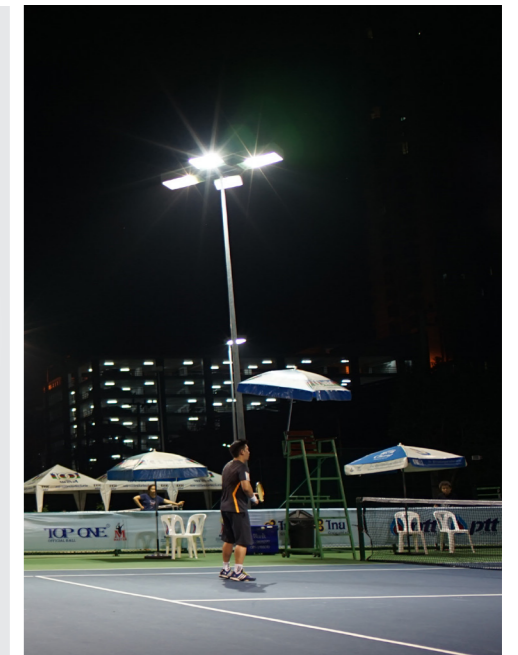


LIGHTING SPORTS LIGHTING

OCULAR SERIES

GRAND VISTA SERIES

LIGHTING SPORTS LIGHTING



OCULAR SERIES LED SPORTS LIGHTING

The Ocular Series LED Sports Lights are a highly efficient, precision lighting solution for outdoor courts and small playing fields.

The robust, enclosed design ensures cabling is protected against wildlife and weather, for the fitting to withstand even the harshest outdoor conditions.

Precision asymmetrical lens optics are specifically made to conform to Australian sports lighting standards, without obtrusive light or glare.

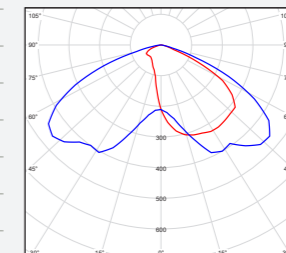
FEATURES

- Outdoor sports and recreation lighting solution
- High efficacy
- 5 year warranty
- Inventronics driver
- Tilt mounting brackets
- Conforms to AS/NZS 60598.2.5 and AS/NZS 61347

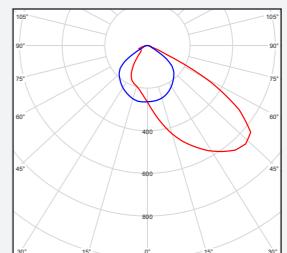
SPECIFICATIONS

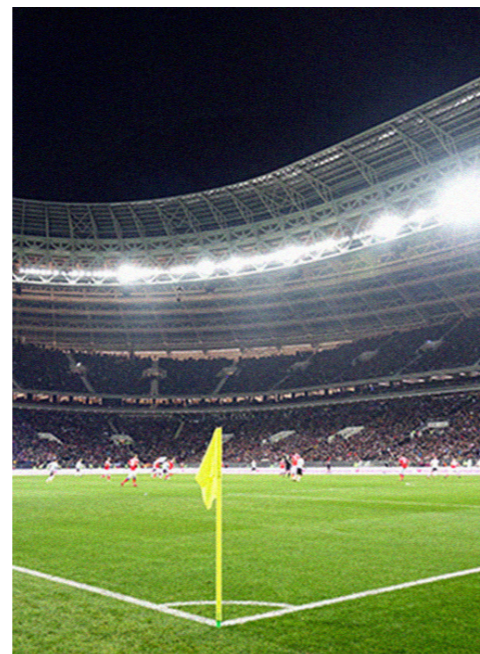
MODEL NUMBER	CCT	WATT	LUMENS	LENS	EFFICACY
EP-OCU-AL1-200	5000K	200W	25,000	1	125lm/W
EP-OCU-AL2-200	5000K	200W	25,000	2	125lm/W
EP-OCU-AL1-300	5000K	300W	37,500	1	125lm/W
EP-OCU-AL2-300	5000K	300W	37,500	2	125lm/W
EP-OCU-AL1-400	5000K	400W	50,000	1	125lm/W
EP-OCU-AL2-400	5000K	400W	50,000	2	125lm/W
EP-OCU-AL1-500	5000K	500W	62,500	1	125lm/W
EP-OCU-AL2-500	5000K	500W	62,500	2	125lm/W
EP-OCU-AL1-600	5000K	600W	75,000	1	125lm/W
EP-OCU-AL2-600	5000K	600W	75,000	2	125lm/W

LENS 1



LENS 2





GRAND VISTA SERIES LED SPORTS LIGHTING

The Grand Vista series is designed from an ethos of optical precision, sleek sophisticated aesthetics and optimal LED lighting efficiency to deliver superior lighting for professional and recreational sports environments.

Asymmetrical lens optics provide precise beam control to conform to Australian sports lighting standards, without glare or light spill, while delivering crisp, uniform lighting to the playing surface.

Exceptionally high lighting efficiency ensures power consumption is minimised for maximum lumen output.

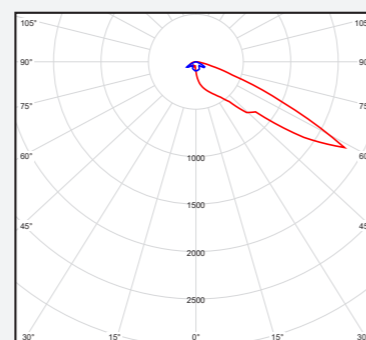
FEATURES

- Outdoor sports and recreation lighting solution
- High efficacy
- 5 year warranty
- Inventronics driver
- Tilt mounting brackets
- Conforms to AS/NZS 60598.2.5 and AS/NZS 61347

SPECIFICATIONS

MODEL NUMBER	CCT	WATT	LUMENS	EFFICACY
EP-GV-AL2-600	5000K	600	75,000	125lm/W
EP-GV-AL2-800	5000K	800	100,000	125lm/W
EP-GV-AL2-1200	5000K	1200	150,000	125lm/W

ASYMMETRICAL LENS





EMERGENCY LIGHTING

UNI EMERGENCY BATTENS

FIREFLY SERIES

FIREFLY SURFACE MOUNT KIT

FIREBOX

FIREBIRD

FIREBIRD EXPANSION PLATE





**UNI BATTEN SERIES
EMERGENCY BATTENS**

The Uni Emergency Batten with a premium, 3 hour backup Lithium Nanophosphate (LiFePO4) battery, is fully compliant to the AS2293 emergency lighting standard.

With switchable tri-colour settings and built-in adjustable motion sensors, the Uni Emergency Batten allows customisation to a range of preferences. The Uni Emergency Batten also includes a self-test function to ensure that the battery is fully operational. Automated tests are performed at varying intervals with a visual warning light displayed when a problem is detected.

FEATURES

- Maintain emergency light
- 4.5W/3hr emergency power
- C0:D63, C90:D50
- Sensor with adjustable dim levels and hold times
- Self-test functionality
- IP20/65 and IK08/10 rating model options

SPECIFICATIONS

POWER FACTOR	>0.9
CRI	>80
BEAM ANGLE	120°
IP RATING	20 or 65
LIFETIME (L70)	>60,000hrs
WARRANTY	5 Years

DETECTION RANGE	5 or 10 metres
HOLD TIME	1m, 5m, 15mins or infinite
DAYLIGHT SENSOR	50Lux or disabled
STANDBY PERIOD	0s, 5m, 30m or infinite
STANDBY LEVEL	10, 20, 30 or 50%

Highlighted values = sensor default settings

MODEL NUMBER	CCT	DIMENSIONS	WATT	LCP	LPM	LUMENS	EFFICACY
IP20 TRI-COLOUR EMERGENCY WITH SENSOR							
EP-UNI-TES620-18	4/5/6000K	600mm	18	18.31	1.8	2283	125lm/W
EP-UNI-TES1220-15	4/5/6000K	1200mm	15	15	1.5	2000	133lm/W
EP-UNI-TES1220-25	4/5/6000K	1200mm	25	24.71	2.5	3307	134lm/W
EP-UNI-TES1220-35	4/5/6000K	1200mm	35	35	3.5	4200	120lm/W
IP65 TRI-COLOUR EMERGENCY WITH SENSOR							
EP-UNI-TES665-18	4/5/6000K	600mm	18	18	1.8	2200	125lm/W
EP-UNI-TES1265-25	4/5/6000K	1200mm	25	24.88	2.5	2957	119lm/W
EP-UNI-TES1265-35	4/5/6000K	1200mm	35	34.94	3.5	4351	125lm/W



*Firefly Surface Mount Kit

**FIREFLY SERIES
EMERGENCY CEILING**

The Firefly Emergency Light is easy to install and supported by a premium, 2-hour backup Lithium Nanophosphate (LiFePO4) battery. They are fully compliant to the AS2293 emergency lighting standard.

FEATURES - D32

- 3 year Lithium BST LiFePO4 battery 1.8W LED
- Non-maintained mode
- 2hr emergency power
- 6.4V 1500mAh
- 70mm and 90mm compatible

MODEL OPTIONS

D32: EP-FF-D32	1.8	C0:D32 C90:D32
D50: EP-FF-D50	3.6	C0:D50 C90:D50

FIREFLY SURFACE MOUNT KIT

- Suited for Emerald Planet Firefly Series Emergency Light
- Can be surface mounted or suspended
- 70mm cut-out lighting standard.

SPECIFICATIONS

MODEL NUMBER	DIMENSIONS
EP-FF-SM	220x220x55mm



FIREBOX

The Firebox Emergency Exit Sign has uniform illumination across the surface (no shadowing) featuring a premium, 2-hour backup lithium Nanophosphate (LiFePO4) battery. They are fully compliant to the AS2293 emergency lighting standard.

FEATURES

- 3 year Lithium BST LiFePO4 battery
- Maintained mode
- 16hr charge time
- 4.5W emergency power
- 2hr emergency power
- 6.4V 1500mAh
- 3 year warranty
- CO:E10, C90:D10



FIREBIRD

The Firebird Emergency Exit Sign is designed for indoor use and features a premium, 2-hour backup lithium Nanophosphate (LiFePO4) battery. They are fully compliant to the AS2293 emergency lighting standard.

FEATURES

- 3 year Lithium BST LiFePO4 battery
- Maintained mode
- 16hr charge time
- 4.5W emergency power
- 2hr emergency power
- 6.4V 1500mAh
- 3 year warranty
- CO:E10, C90:D10



FIREBIRD EXPANSION PLATE

- Suited for Emerald Planet Firebird Emergency Exit Signs to expand the faceplate and cover larger holes.
- 328mm cut-out, 495mm faceplate.



SMOKE ALARMS

**240V WIRED
INTERCONNECTION**

**240V WIRED RF
INTERCONNECTION**

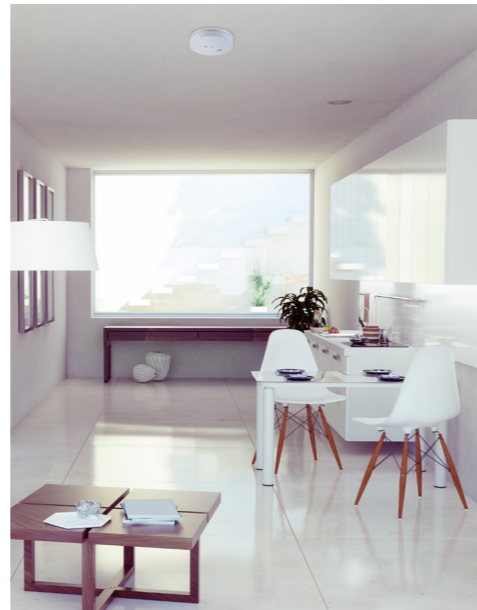
**1YR BATTERY POWERED RF
INTERCONNECTION**

**10YR BATTERY POWERED RF
INTERCONNECTION**

BATTERY POWERED (1YR)

BATTERY POWERED (10YR)





240V WIRED INTERCONNECTION
1YR & 10YR REPLACEABLE BATTERY
MODEL OPTIONS

The Emerald Planet Photoelectric Smoke Alarm is powered by 240V mains power and supported by either a 1-year 9V or 10-year lithium replaceable battery back-up.

The alarm is fitted with a test/hush/silence button to facilitate testing of the alarm.

The silence function also allows the alarm and alarm system to be silenced in the case of a false alarm.

The alarm can be used as a stand-alone or connected with up to 12 alarms on one network, with installation and maintenance made easy using the easy-fit base.

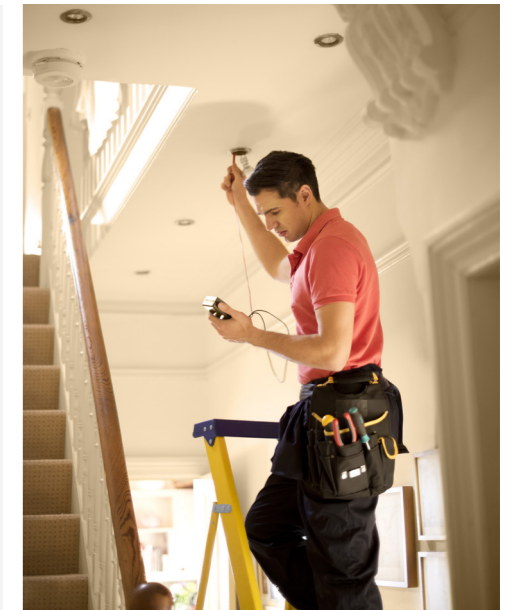
FEATURES

- Slimline base plate and easy-fit base included
- Interconnectable with up to 12 alarms on one hardwired network
- High visibility LED indicator lights for test/hush/silence and fault warnings
- Loud alarm: 85dB(A) @ 3m
- CSIRO ActivFire listed
- Meets Australian smoke alarm standards (AS3786:2014)
- 5 year warranty



SPECIFICATIONS

MODEL NUMBER	EP-HW-240-Li10 EP-HW-240-R1	POWER	240V with 1yr 9V or 10yr lithium replaceable battery back-up
NORMAL OPERATING & STORAGE TEMPERATURE	0° to 40°	SENSOR	Photoelectric optical chamber
DIMENSIONS	125mm dia. 40mm deep	ALARM VOLUME	>85dB(A) @ 3m
WEIGHT	190g	INTERCONNECT	Hardwire interconnection. Up to 12 units per circuit
WARRANTY	5 Years	NORMAL OPERATING & STORAGE HUMIDITY	15% to 95% relative humidity (non-condensing)



240V WIRED RADIO FREQUENCY (RF) INTERCONNECTION
1YR & 10YR REPLACEABLE BATTERY
MODEL OPTIONS

The Emerald Planet Photoelectric RF Smoke Alarm is powered by 240V mains power and supported by either a 1-year 9V or 10-year lithium replaceable battery back-up.

The alarm is fitted with a test/hush/silence button to facilitate testing of the alarm.

The silence function also allows the alarm and alarm system to be silenced in the case of a false alarm.

The RF capability enables connection with up to 40 alarms on one wireless network, with installation and maintenance made easy using the RF easy-fit base.

FEATURES

- Slimline base plate and RF easy-fit base included
- RF enabling connection with up to 40 alarms
- High visibility LED indicator lights for test/hush/silence and fault warnings
- Loud alarm: 85dB(A) @ 3m
- CSIRO ActivFire listed
- Meets Australian smoke alarm standards (AS3786:2014)
- 5 year warranty



SPECIFICATIONS

MODEL NUMBER	EP-HW-240-Li10 EP-HW-240-R1	POWER	240V with 1yr 9V or 10yr lithium replaceable battery back-up
NORMAL OPERATING & STORAGE TEMPERATURE	0° to 40°	SENSOR	Photoelectric optical chamber
DIMENSIONS	125mm dia. 40mm deep	ALARM VOLUME	>85dB(A) @ 3m
WEIGHT	190g	INTERCONNECT	Radio Frequency (RF) enabling connection with up to 40 alarms on one wireless network
WARRANTY	5 Years	RF COMPATIBILITY	Compatible with EP-RF-Li10 smoke alarms
		NORMAL OPERATING & STORAGE HUMIDITY	15% to 95% relative humidity (non-condensing)



**1YR BATTERY POWERED
- WIRELESS (RF) INTERCONNECTION**

The Emerald Planet (EP-RF-R1) Photoelectric Smoke Alarm is powered by 2 x 1.5V AA replaceable batteries.

The alarm is fitted with a test/hush/silence button to facilitate testing of the alarm.

The silence function allows the alarm/system to be silenced in the case of a false alarm. Silencing one alarm will silence all connected alarms.

This alarm can be stand-alone or can be connected (wireless RF) with up to 30 alarms. This allows all smoke alarms connected to activate simultaneously.

FEATURES

- 1 year replaceable 2 x 1.5V AA batteries
- RF interconnectable with up to 30 alarms on one wireless network
- High visibility LED indicator lights for test/hush/silence and fault warnings
- Loud alarm - 85dB(A) @ 3m
- CSIRO ActivFire listed
- Meets Australian smoke alarm standards (AS3786:2014)
- 5 year warranty



SPECIFICATIONS

MODEL NUMBER	EP-RF-R1	POWER	1yr, 2 x 1.5V replaceable AA batteries
NORMAL OPERATING & STORAGE TEMPERATURE	0° to 40°	SENSOR	Photoelectric optical chamber
DIMENSIONS	118mm dia. 38mm deep	ALARM VOLUME	>85dB(A) @ 3m
WEIGHT	190g	INTERCONNECT	Wireless RF interconnection. Up to 30 units per network
WARRANTY	5 Years	NORMAL OPERATING & STORAGE HUMIDITY	15% to 95% relative humidity (non-condensing)
		INCLUDES	Screws and mounting plate
		COMPATIBILITY	RF smoke alarm is only compatible with additional units of the same model (EP-RF-R1).



**10YR BATTERY POWERED
- WIRELESS (RF) INTERCONNECTION**

The Emerald Planet (EP-RF-Li10) Photoelectric Smoke Alarm is powered by a non-replaceable 10-year rated Lithium battery.

The alarm is fitted with a test/hush/silence button to facilitate testing of the alarm.

The silence function allows the alarm system to be silenced in the case of a false alarm. Silencing one alarm will silence all connected alarms.

This alarm can be used as a stand-alone alarm or can be connected with up to 40 alarms. This allows all smoke alarms connected to activate simultaneously.

FEATURES

- 10 year 3V Lithium ion battery
- RF interconnectable with up to 40 alarms on one wireless network
- High visibility LED indicator lights for test/hush/silence and fault warnings
- Loud alarm - 85dB(A) @ 3m
- CSIRO ActivFire listed
- Meets Australian smoke alarm standards (AS3786:2014)
- 5 year warranty



SPECIFICATIONS

MODEL NUMBER	EP-RF-Li10	POWER	DC 3V 10yr rated Lithium ion battery (non-removable)
NORMAL OPERATING & STORAGE TEMPERATURE	0° to 40°	SENSOR	Photoelectric optical chamber
DIMENSIONS	112mm dia. 38mm deep	ALARM VOLUME	>85dB(A) @ 3m
WEIGHT	190g	INTERCONNECT	Wireless RF interconnection. Up to 40 units per network
WARRANTY	5 Years	NORMAL OPERATING & STORAGE HUMIDITY	15% to 95% relative humidity (non-condensing)
		INCLUDES	Screws and mounting plate
		COMPATIBILITY	RF smoke alarm is compatible with - • 240V smoke alarms with RF base • Self-compatible (i.e. additional units of the same model)



BATTERY POWERED
1YR 9V REPLACEABLE BATTERY

The Emerald Planet (EP-SA-R1) Photoelectric Smoke Alarm is powered by a 1-year 9V replaceable battery.

This is a stand-alone alarm, fitted with a test button to facilitate testing of the alarm.

Designed to meet the rigorous new Australian smoke alarm standards (AS3786:2014).

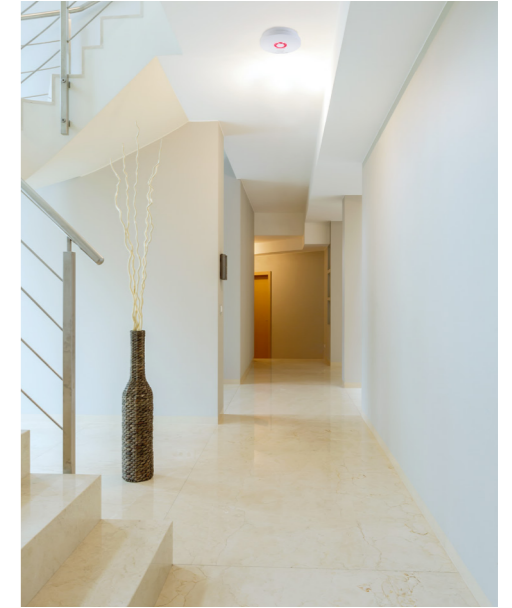
FEATURES

- 1 year replaceable 9V battery
- High visibility LED indicator lights for test and fault warnings
- Loud alarm - 85dB(A) @ 3m
- CSIRO ActivFire listed
- 5 year warranty



SPECIFICATIONS

MODEL NUMBER	EP-SA-R1	POWER	1yr, 9V replaceable battery
NORMAL OPERATING & STORAGE TEMPERATURE	0° to 40°	SENSOR	Photoelectric optical chamber
DIMENSIONS	130mm dia. 30mm deep	ALARM VOLUME	>85dB(A) @ 3m
WEIGHT	160g	INTERCONNECT	None, stand-alone unit
SENSITIVITY	0.09-0.15d B/m	NORMAL OPERATING & STORAGE HUMIDITY	15% to 95% relative humidity (non-condensing)
WARRANTY	5 Years	INCLUDES	Screws and mounting plate



BATTERY POWERED
10YR LITHIUM BATTERY

The Emerald Planet (EP-SA-Li10) Photoelectric Smoke Alarm is powered by a 10-year lithium battery.

This alarm is a stand-alone alarm, fitted with a test/hush/silence button to facilitate testing of the alarm.

The silence function allows the alarm/system to be silenced in the case of a false alarm.

Designed to meet the rigorous new Australian smoke alarm standards (AS3786:2014).

FEATURES

- 10 year non-replaceable Lithium battery
- High visibility LED indicator lights for test/hush/silence and fault warnings
- Loud alarm - 85dB(A) @ 3m
- CSIRO ActivFire listed
- 5 year warranty



SPECIFICATIONS

MODEL NUMBER	EP-SA-Li10	POWER	10yr non-replaceable lithium battery
NORMAL OPERATING & STORAGE TEMPERATURE	0° to 40°	SENSOR	Photoelectric optical chamber
DIMENSIONS	100mm dia. 30mm deep	ALARM VOLUME	>85dB(A) @ 3m
WEIGHT	160g	INTERCONNECT	None, stand-alone unit
WARRANTY	5 Years	NORMAL OPERATING & STORAGE HUMIDITY	15% to 95% relative humidity (non-condensing)
		INCLUDES	Screws and mounting plate



ACCESSORIES

DIMMERS

**STANDBY POWER
CONTROLLERS**

FAN SEAL

**TORRENT FLOODLIGHT
GLARE SHIELD**

MOTION SENSOR

ALUMINIUM REFLECTOR

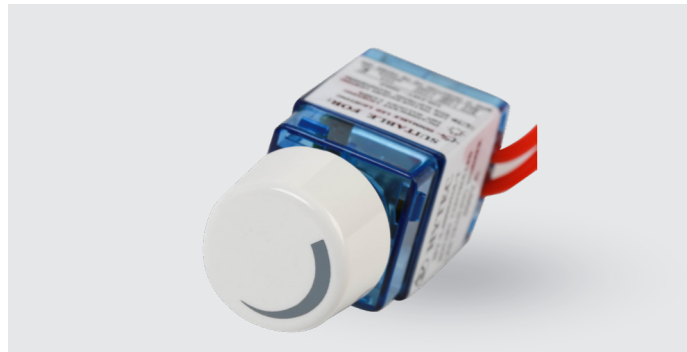
**TORRENT FLOODLIGHT
WIRE GUARD**

GU10 CONNECTOR

**SURFACE MOUNTING
FRAME**

**RECESSED MOUNTING
FRAME**

**FIREBIRD
EXPANSION PLATE**



DIMMERS

FEATURES

- Trailing edge dimmer specifically designed for LEDs
- Smooth dimming across a wide dimming range
- Compatible with all Emerald Planet LED lights
- Trailing edge type, rated for 400VA load
- Must be installed by a licensed electrician



STANDBY POWER CONTROLLERS

FEATURES

- Standby power saver
- 6 socket outlets:
 - 1 x master socket
 - 4 x slave sockets
 - 1 x always on power socket
- 1 hour automatic shutdown
- Surge/overload protection



MOTION SENSOR

FEATURES

- Daylight sensor
- Programmable sensor settings
- IP65 rating



ALUMINIUM REFLECTOR

FEATURES

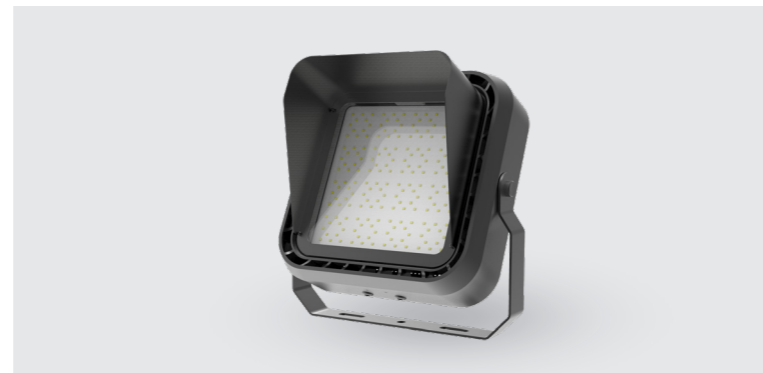
- Beam angle 70°
- Installation via 4 x screws into the face-plate
- Dimension - 410x150mm
- Full cut-off design



FAN SEAL

FEATURES

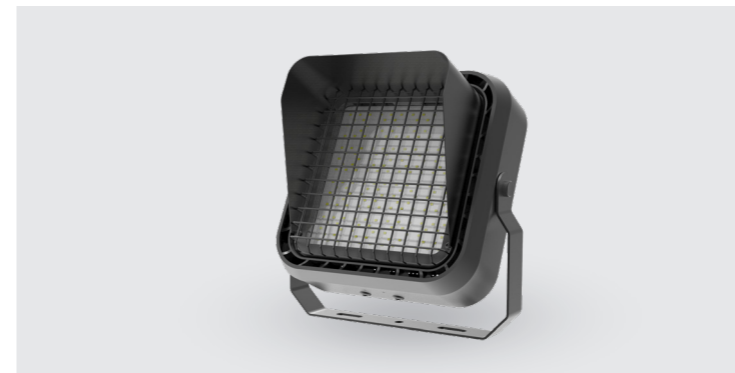
- Can be installed from inside the house
- no ceiling access required



TORRENT FLOODLIGHT GLARE SHIELD

FEATURES

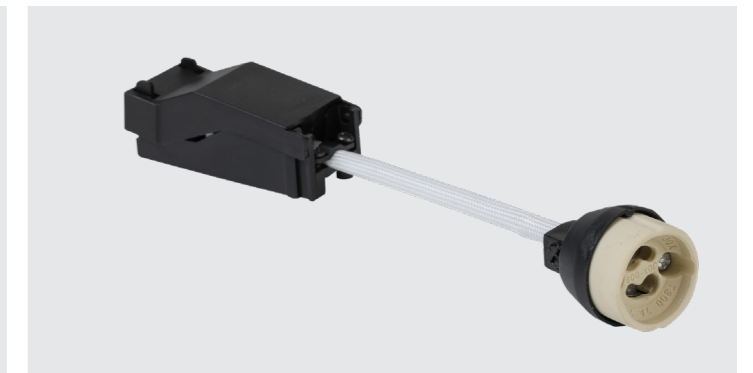
- The Torrent Glare Shield is designed to minimise unwanted glare and light disturbance in sensitive environments. Suitable for usage in residential areas, on signage and around tall buildings.



TORRENT FLOODLIGHT WIRE GUARD

FEATURES

- The Torrent Wire Guard protects the housing lens of Emerald Planet's Torrent Floodlight series. The wire guard is corrosion resistance and suitable for both indoor and outdoor use. Recommended for additional lighting protection in setting such as construction sites and sporting grounds where ball damage could be an issue.



GU10 CONNECTOR

FEATURES

- This double insulated GU10 connector with twin 240V access points is suited for use with Emerald Planet's GU10 Spotlight bulbs.
- Available with optional flex and plug.



SURFACE MOUNTING FRAME

To fit 1192x292mm and 595x595mm size Emerald Planet panels.

RECESSED MOUNTING FRAME

To fit 1192x292mm and 595x595mm size Emerald Planet panels in 1225x325mm and 625x625mm cut-outs.

SPECIFICATIONS

MODEL NUMBER	DIMENSIONS
EP-PF123	1210x310mm
EP-PF63	610x310mm
EP-PF66	613x613mm

SPECIFICATIONS

MODEL NUMBER	DIMENSIONS
EP-RPF123	1270x370mm
EP-RPF63	670x370mm
EP-RPF66	673x673mm



FIREBIRD EXPANSION PLATE

FEATURES

- Suited for Emerald Planet Firebird Emergency Exit Signs to expand the faceplate and cover larger holes.
- 328mm cut-out, 495mm faceplate.



GOVERNMENT ENERGY SAVING SCHEMES

AUSTRALIA'S ENERGY-EFFICIENCY SCHEMES

The Australian Government developed a series of state-based energy-efficiency schemes to incentivise the adoption of smart-technology solutions to help reduce energy usage and the carbon footprint of businesses and households across Australia.

STATE	SCHEME NAME
VIC	Victorian Energy Upgrades (VEU)
NSW	Energy Saving Scheme (ESS)
ACT	Energy Efficiency Improvement Scheme (EEIS)
SA	Retailer Energy Efficiency Scheme (REES)

EMERALD PLANET'S ENERGY-EFFICIENT TECHNOLOGY

Emerald Planet continues to work closely with government agencies to ensure our products are at the forefront of energy-efficient technology and aligned to the benchmarks set by the energy-efficiency schemes across Australia. Since our inception, we have delivered millions of energy-efficient scheme approved products to households and businesses across Australia.

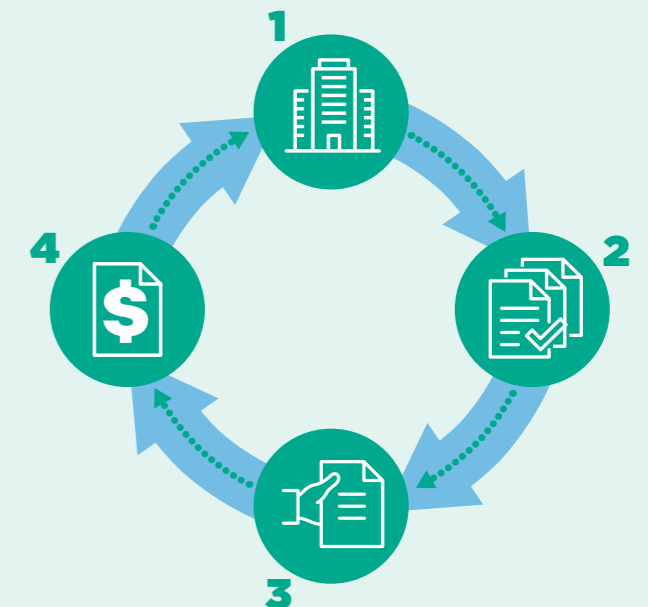
“Emerald Planet is the largest energy-efficient technology manufacturer actively engaged in all state-based energy-efficiency schemes across Australia.”

Stuart Edgley
Emerald Planet Managing Director

HOW THE SCHEMES WORK

1. Households/businesses upgrade technology to reduce their energy consumption
2. Accredited certified providers create energy-saving certificates based on the reduction in carbon emissions
3. Electrical retailers buy certificates
4. The rebate values created via certificate purchase is returned to the business/household

Energy-efficiency schemes have encouraged millions of businesses and households across Australia to use energy more efficiently through the adoption and upgrade to new technology.



COMMONLY USED LIGHTING TERMS

ASYMMETRIC BEAM

Asymmetric beams are used in specialised task lighting, designed to illuminate a specific targeted area with minimal or no unintended light spilling into surrounding areas.

BEAM ANGLE

A beam angle is a measurement of how the light is distributed.

CCT (COLOUR RENDERING TEMPERATURE, KELVINS)

Perceived colour of the light being produced. White light spectrum generally starts at "Warm White" 2700K (yellow look) up to "Daylight" 6500K (blue look).

COB (CHIP ON BOARD)

Type of LED chip technology identified by a single, large chip in the middle of a luminaire.

CRI (COLOUR RENDERING INDEX)

Higher the better, >80 accepted as superior for general lighting purposes.

DIMMER COMPATIBILITY

Suitability of new LED lights to operate with legacy dimmers designed for inefficient "halogen" lamps. Each LED model will have differing compatibilities; this will need to be checked before installation.

EFFICACY (LUMENS PER WATT)

How efficiently the light source turns electrical power into light. The higher this number, the better.

INGRESS PROTECTION (IP)

An international measure represented by two-digits used to describe the protection a light fitting has to stop the penetration of solid objects or water.

L70 (LED LIFETIME)

A mathematical projection based on LED chip data to estimate the lumen depreciation of an LED light source. It is stated as the amount of time in hours it will take for the lumen output of the light to fall to 70% of its initial output.

LCP (LAMP CIRCUIT POWER, WATTS)

The amount of electrical power consumed by the light source.

LUMENS (ILLUMINANCE)

The amount of light emitted by the light source.

LUX

Lux is the unit of illuminance measured on a surface.

LPM (LOW POWER MODE)

A light uses sensor technology to adjust to Low Power Mode (LPM) and reduces the power consumption.

MICROWAVE SENSOR

Microwave sensors are used to detect movement in luminaires fitted with this option. Microwave sensors are more sensitive at detecting movement than traditional PIR (passive infrared) sensors.

POWER FACTOR

The power factor is the ratio of real power that is used and the apparent power that is supplied to the circuit.

SDCM (STANDARD DEVIATION COLOUR MATCHING)

A guide as to the closeness of the actual CCT to the target colour. Measured in McAdam ellipses, a 7 step SDCM is regarded as acceptable for general lighting.

SMD (SURFACE MOUNTED DIODE)

Type of LED chip technology identified by close arrangement of smaller chips in a luminaire.

SYMMETRIC BEAM

Symmetric beams are used in area lighting, where light is evenly spread around. Symmetric beams can be of different beam angles to cater for different installation applications.

UGR (UNIFIED GLARE RATING)

The measurement of the amount of light from a lighting installation incident on an eye. Dependent on where lights are positioned rather than a property of a light itself. A key consideration in lighting designs.

INGRESS PROTECTION (IP) RATING GUIDE

The degrees of protection provided against the intrusion of solid objects, dust, accidental contact and water in electrical enclosures.

First Digit:

Level	Protection against solid objects of size
0	—
1	>50mm (e.g. back of hand)
2	>12.5mm (e.g. a finger)
3	>2.5mm (e.g. tools, thick wires etc.)
4	>1mm (e.g. most wires, slender screws, large ants etc.)
5	Dust protected (blocks out most dust)
6	Dust tight (blocks out all dust)

Second Digit:

Level	Protection against liquids
0	None
1	Dripping water
2	Dripping water when tilted at 15°
3	Spraying water
4	Splashing of water
5	Water jets
6	Powerful water jets
6K	Powerful water jets (with increased pressure)
7	Immersion (up to 1m depth)
8	Immersion (1m or more depth)
9K	Powerful high temperature water jets

Example:



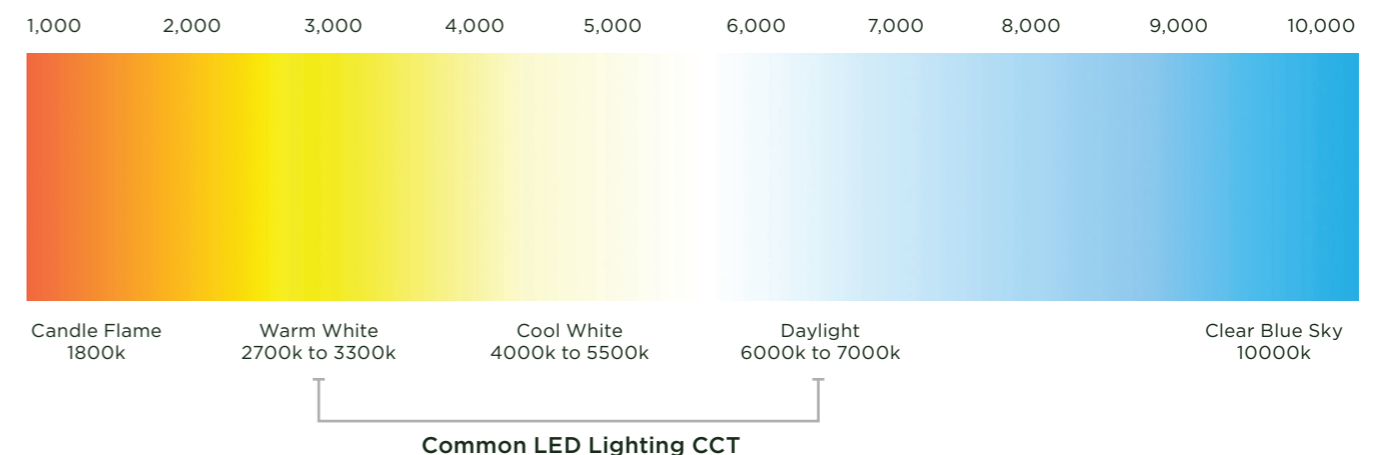
IP 6.5

Dust Tight

Resistant to jets of water

CCT SPECTRUM

LED Light Colour Temperature, measured in Kelvin (K)





EMERALD
PLANET

LOCATIONS



SYDNEY

Unit 2/29 Mitchell Road
Brookvale NSW 2100

P 02 9466 6000



MELBOURNE

38 Punt Road
Windsor VIC 3181

P 1300 511 148



WAREHOUSING

- Sydney
- Melbourne
- Adelaide
- Brisbane
- Gold Coast
- Canberra